

BLACK CTS JG TWIST & LOCK® FITTINGS



The Black PEI Range of Twist & Lock Fittings is offered in 3/4" and 1" CTS sizes. They have been specifically designed for Water Filtration/Softener Installs; however, they are also suitable for applications in Plumbing Repair and Remodel, Marine and R.V. The fittings are manufactured from high quality engineered plastic with EPDM O-rings. Speedfit Push-in system is suitable for hot and cold water plumbing applications.

Prices subject to change without notice.

Not Suitable for gas.

NEW
Lead Free
UV Resistant

UNION CONNECTOR



PART NO.	SIZE CTS	BAG QTY	BOX QTY
PEI0428E	3/4"	5	25
PEI0436E	1"	1	15

MALE CONNECTOR



PART NO.	SIZE CTS x NPT	BAG QTY	BOX QTY
PSEI012826E	3/4" x 3/4"	5	50
PSEI013628E	1" x 1"	2	20

UNION ELBOW



PART NO.	SIZE CTS	BAG QTY	BOX QTY
PEI0328E	3/4"		20
PEI0336E	1"	1	10

MALE STEM ADAPTER



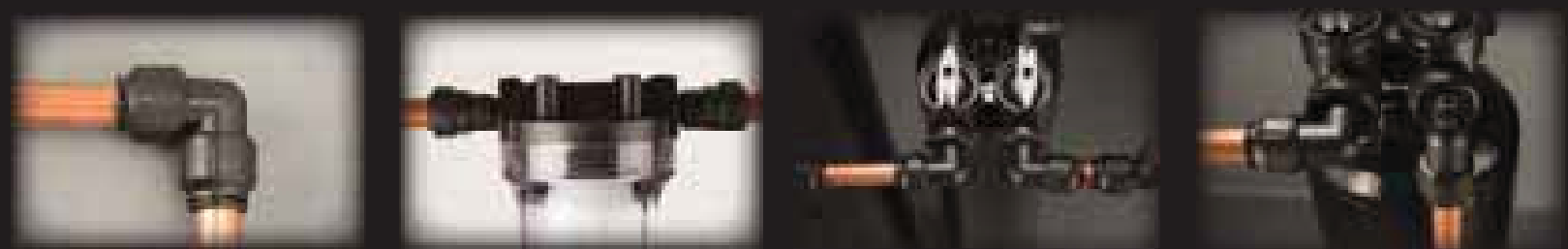
PART NO.	SIZE CTS x NPT	BAG QTY	BOX QTY
PSEI052826E	3/4" x 3/4"		1
PSEI053628E	1" x 1"		

UNION TEE



PART NO.	SIZE CTS	BAG QTY	BOX QTY
PEI0228E	3/4"	2	10
PEI0236E	1"		5

The Brand Most Trusted by Water Professionals Worldwide



Working Pressures and Temperatures:

Application: Water

Max. Pressure	Max Temperature
160 psi	73°F
100 psi	190°F
80 psi	200°F



Do not use with gas, fuel oil or compressed air applications.